

**HIGH QUALITY, INTIMATE-SCALE,
STUDENT-CENTERED EDUCATION IN A BEAUTIFUL,
WARM, AND STIMULATING ENVIRONMENT**



Claremont Graduate University

CGU is a member of the prestigious Claremont Consortium of seven institutions of higher education (Pomona College, Harvey Mudd College, Claremont McKenna College, Scripps College, Pitzer College, and Keck Graduate Institute).

CGU is nestled in the foothills of the San Gabriel mountains about 35 miles east of downtown Los Angeles, California. Claremont is known as a beautiful west coast college town with a sunny Mediterranean climate year round, and as the "City of Trees and Ph.D.s." Claremont is centrally located so that students are within an hour of some of the best Southern California beaches, mountains, ski resorts, desert resorts and recreation, nightlife and entertainment.



Admissions and Financial Aid

To learn about admissions and financial aid opportunities, to visit our campus, or to make contact with current students or alumni, contact:

Karen Redwine, Career Advisor
School of Behavioral &
Organizational Sciences
Email: career.advisor@cgu.edu
Tel: (909) 607-0878

Laura Carrillo,
Recruiter & Admissions Coordinator
School of Politics & Economics
Email: laura.carrillo@cgu.edu
Tel: (909) 621-8699

www.cgu.edu



PUBLIC POLICY AND EVALUATION

The Master's program in Public Policy and Evaluation at Claremont Graduate University seeks students devoted to ensuring that public policies, programs, and practices are effective at preventing and ameliorating society's most pressing social and political problems. This program requires students to complete a rigorous curriculum in both Public Policy Studies and Evaluation Science. Graduates of this program will be highly qualified for major leadership positions in government, business, research, consulting, and other public policy oriented domains.

PUBLIC POLICY & EVALUATION



PUBLIC POLICY & EVALUATION AT CLAREMONT

The Faculty

Claremont Graduate University has an extensive faculty body, including 20 core faculty members in the areas of Policy and Evaluation Science and over 50 graduate faculty members at the adjoining Claremont Colleges.



Robert Klitgaard
Public Policy,
Corruption,
International
Development
Evaluation



Yi Feng
International Political
Economy, World
Politics, Research
Methods



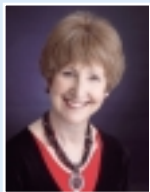
Annette Steinacker
Public Policy, Urban
Politics, Quantitative
Research Methods



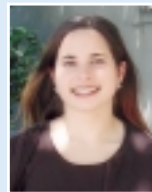
**Stewart I.
Donaldson**
Evaluation Science,
Organizational
Development



Christina A. Christie
Evaluation & Applied
Research Methods



Hallie Preskill
Evaluation & Applied
Research Methods
(*President of the
American Evaluation
Association, 2007*)



Jennifer Merolla
Campaigns &
Elections, Public
Opinion, Political
Psychology, and
Congress



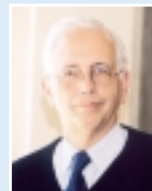
Jean Schroedel
Congressional/
Executive Relations,
Gender Politics



Dale E. Berger
Evaluation & Applied
Research Methods,
Statistics



Paul J. Zak
Neuroeconomics,
Macroeconomics,
Finance & General
Equilibrium Theory



Arthur T. Denzau
Economics of
Management and
Organizations, Public
Economics



William D. Crano
Evaluation & Applied
Research Methods



Michelle C. Bligh
Qualitative Research
Methods, Political
Leadership



Michael Hogg
Social Psychology,
Leadership, Group
Identity



Eusebio Alvaro
Health Behavior
Evaluation



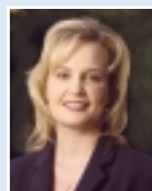
Kathy Pezdek
Statistics



Allen M. Omoto
Applied Research
Methods,
Volunteerism



Jason Siegel
Public Persuasion;
Survey methods;
Health Behavior



Rebecca M. Eddy
Educational
Evaluation & Applied
Research Methods



Tiffany Berry
Educational
Evaluation & Applied
Research Methods



The Program

This program is designed to provide students with skills to conduct evaluations that are relevant to informing critical policy decisions. Students will learn about a range of political contexts and be trained to provide sound policy analysis and evaluation. The curriculum is designed so that students can complete the program in two years of graduate study. It offers extensive personal interaction and mentoring from experts in Policy Analysis and Evaluation Science.

The Master of Arts in Public Policy and Evaluation is a joint program between the School of Behavioral and Organizational Sciences (SBOS) and the School of Politics and Economics (SPE). Drawing on CGU's strengths in Public Policy and Evaluation, plus strong research methodology offerings in both schools, allows students to build a combination of skills that will prepare them for a wide range of attractive careers.

In a single program, we can provide training on the organizational and process implementation techniques, plus training on the technical aspect of outcome evaluations. Courses from both the public policy and psychology/evaluation departments include a strong emphasis on the political issues involved in evaluations of any kind – including the stakeholder/constituent role in evaluation, empowerment aspects, and the ethical requirements of a policy analyst/evaluator.