



Community Clinics Health Network: Connecting for Care

**E-Health for People and Communities:
Claremont Graduate University**

**Linda Travis Macomber RN BSN MBA
Dec 1, 2006**



Introduction: California Forest

- **How do these giants?**
 - Live 2000 years
 - Reach over 350 feet in height
- **Yet, their roots typically reach no deeper than 4-6 feet**





The Power of Connection

Not alone

Their roots systems:

- Extend to a radius of 100 feet or more
- Intertwine with the roots of their neighbors
- Create a stable networked foundation



Objectives

Learn about:

- Populations that community clinics serve and the connections required to meet their needs
- Council of Community Clinics organization
- California Networks EHR Adoption Program
- Connecting for Care Model



COUNCIL OF
COMMUNITY CLINICS

Population/Challenge

Population

- Community clinics specialize in caring for the growing numbers uninsured and indigent
- 6.6 million Californians is
 - Greater than entire populations of 38/50 states
 - Fills an average NFL stadium 100 times
- Approximately 2/3 population of California is in Southern California

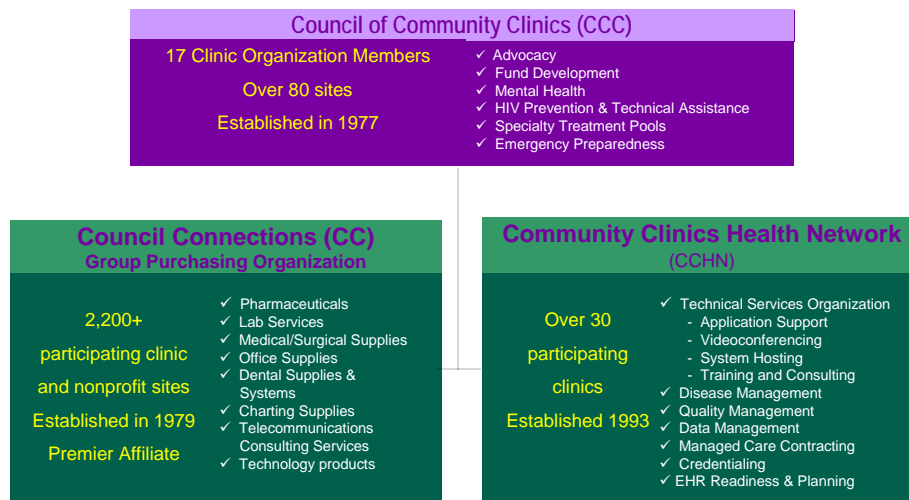
Challenge

Clinics that provide the most basic health services for this population often are underserved themselves in term of information technology, resources and services (less than 8% of community clinics have begun adopting EHR's)



COUNCIL OF
COMMUNITY CLINICS

Council of Community Clinics' Organizational Structure



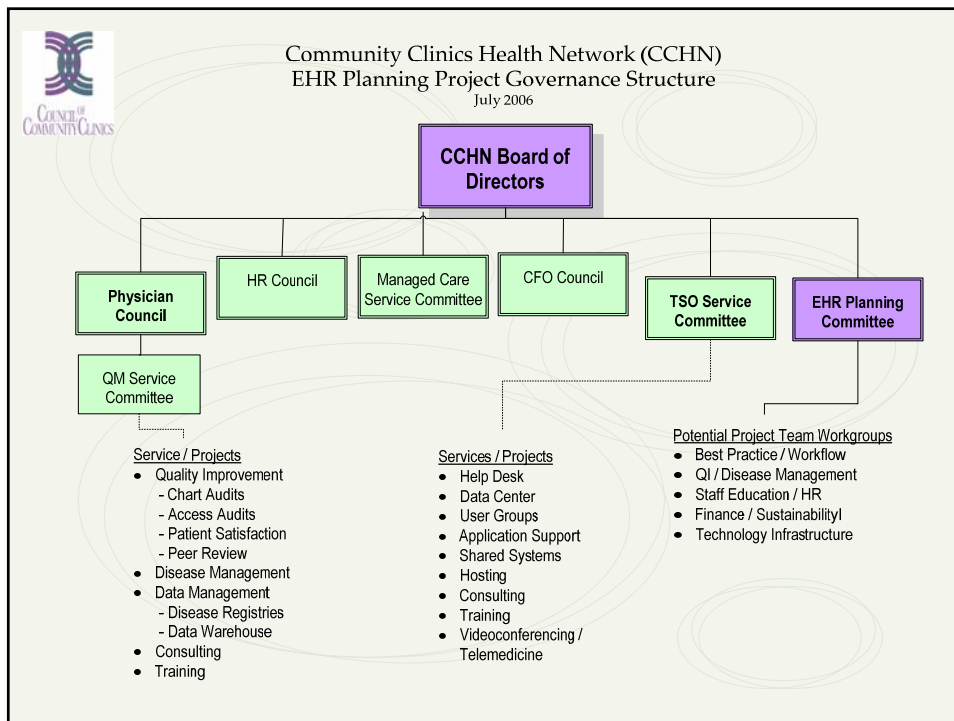



CCHN Mission

The Community Clinics Health Network, as a subsidiary of the Council of Community Clinics,

- enhances quality of care
- improves population health outcomes
- strengthens business efficiencies

by offering specialized programs, services and technology solutions to community clinics and health centers.






The Program: CNEA

California Networks for EHR Adoption


Request for Proposals: Phase I - Planning

A program jointly sponsored by:


- Community Clinics Initiative**
A joint program of Tides and The California Endowment
- California HealthCare Foundation**
- Blue Shield of California Foundation**




Community Clinics Initiative
Strong Clinics, Healthy Communities



CALIFORNIA HEALTHCARE FOUNDATION



Blue Shield of California Foundation
An Independent Member of The Blue Shield Association



Health Innovation Ecosystem

<p>Operational/quality Innovation that improves the effectiveness and efficiency of core processes and functions</p>	<p>Community Clinics</p>
<p>Business model Innovation in the structure and/or financial model of the business</p>	<p>CNEA Health Networks/ Foundations</p>
<p>Products/services Innovation in products or services</p>	<p>EHR Vendor Community</p>

* Adapted from "Expanding the Innovation Horizon The Global CEO Study 2006"



CNEA Assistance and Deliverables



TECHNICAL ASSISTANCE TO GRANTEE

- Online Resource Center
- Grantee Kickoff Meeting
- Grantee Coaching



DELIVERABLES

- Clear strategy for the development of the Network
- A Robust Implementation Work Plan detailing timeline, roles of partners, tasks to be accomplished, and resources needed
- Business Plan detailing the budget and how the Network will be funded and sustained

CNEA slide developed by Object Health



COUNCIL OF
COMMUNITY CLINICS

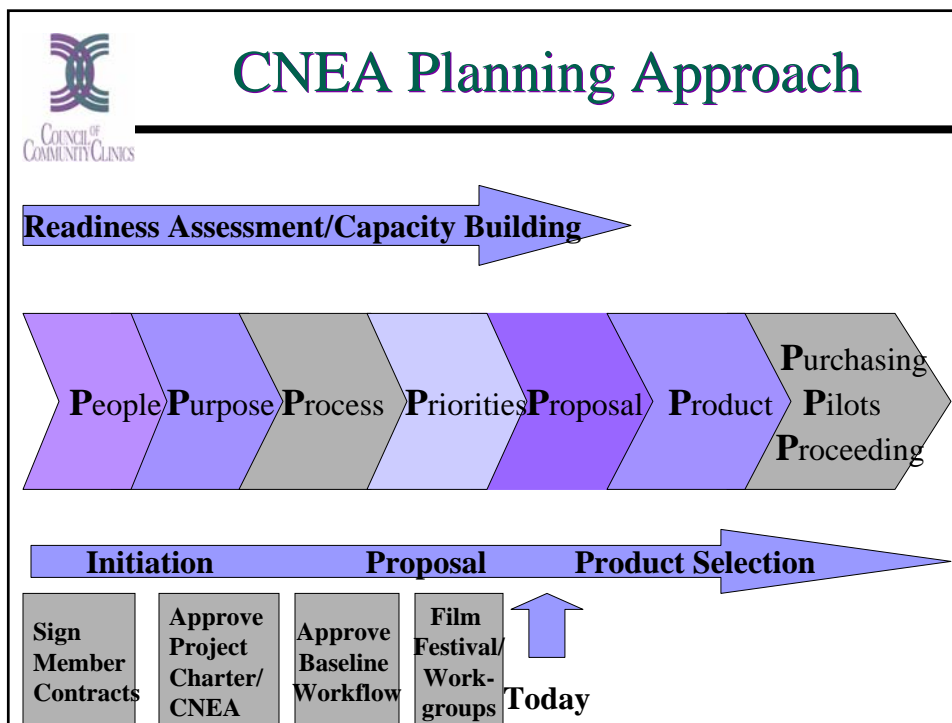
Purpose: Why use a CNEA?

The delegation of health IT functions to the Network enables community clinic to:

1. Achieve operational efficiencies and health quality benefits with less of an investment than they would make as a single organization leveraging group purchasing
2. Afford technologies and systems they could not afford to purchase individually
3. Operate with common clinical systems that facilitate benchmarking/quality improvement/reporting
4. Function within a collaborative infrastructure without losing their independence or community-based focus
5. Be free from the day-to-day management of their technology systems to be better able to focus on their core mission of providing high quality care

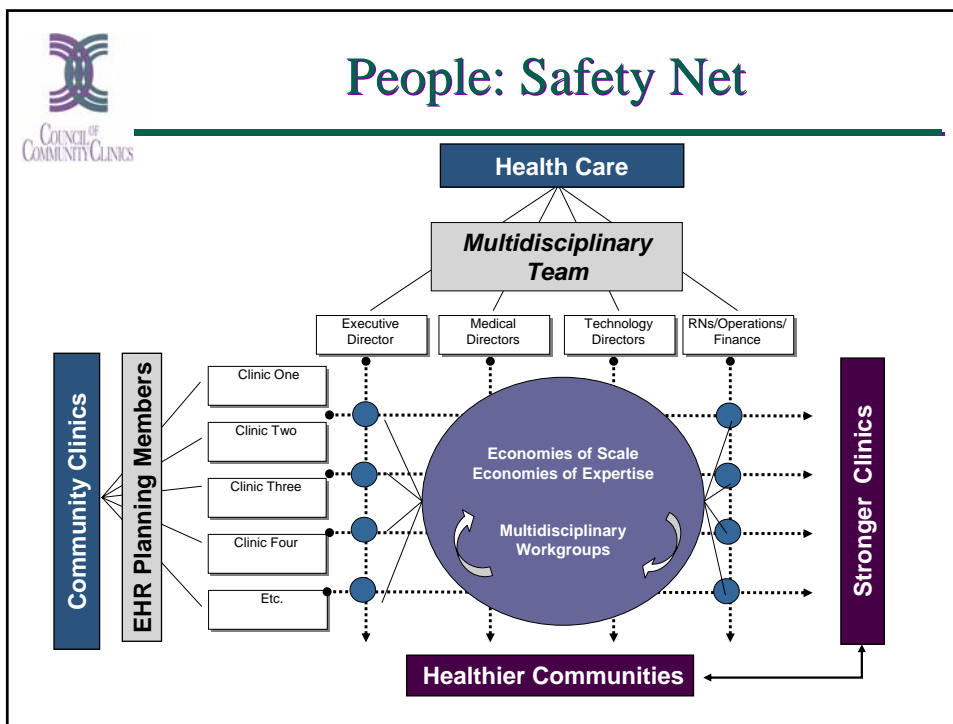
Key Challenges / Opportunities

Clinic-Identified Challenges		How CCHN CNEA Can Help
System Selection	<ul style="list-style-type: none"> ▪ Confidence in a useful product ▪ Finding the right software ▪ Agreement on standard system 	<ul style="list-style-type: none"> ▪ Help identify and define criteria to select product ▪ Develop and distribute RFP for EHR Vendors ▪ Vendor negotiations
Resources	<ul style="list-style-type: none"> ▪ Funding for IT solutions ▪ Funding for dedicated IT staff ▪ Technical capabilities of staff 	<ul style="list-style-type: none"> ▪ Group purchasing product / reducing cost ▪ Collaborative grant opportunities ▪ Hosting EHR system in shared environment ▪ Shared technical support and training
Operational And Workflow Processes	<ul style="list-style-type: none"> ▪ Seamless PM to EHR / integrating system into workflow ▪ Process for getting policies and procedures in place ▪ Strategy / Plan for Implementation of EHR ▪ Time / loss of productivity 	<ul style="list-style-type: none"> ▪ Help identify process changes within organization necessary for successful EHR ▪ Provide process definition and flow tools ▪ Help develop policies and procedures ▪ Planning / readiness assessments ▪ Help develop implementation plan






People: Safety Net




Network Ecosystem Economics


- Realize "Economies of Expertise"
 - Share staff expertise such as for clinical informatics/clinical application coordination, networking, system education and implementation
 - Share implementation experiences, lessons learned, and best practices
- Realize "Economies of Scale"
 - Reduce redundant efforts within a community
 - Create interfaces to key systems one time (local hospitals, labs, pharmacy, etc.)
 - Connect to county systems such as immunization registries and communicable disease surveillance


COUNCIL OF
COMMUNITY CLINICS

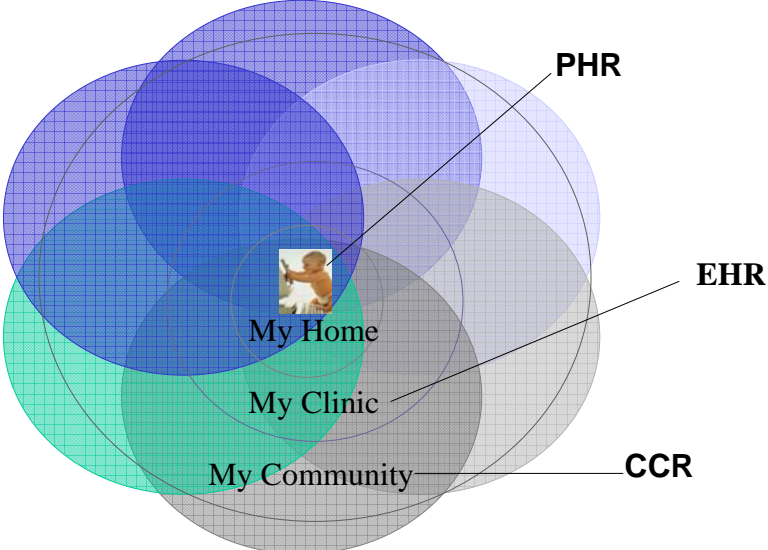
Project Charter



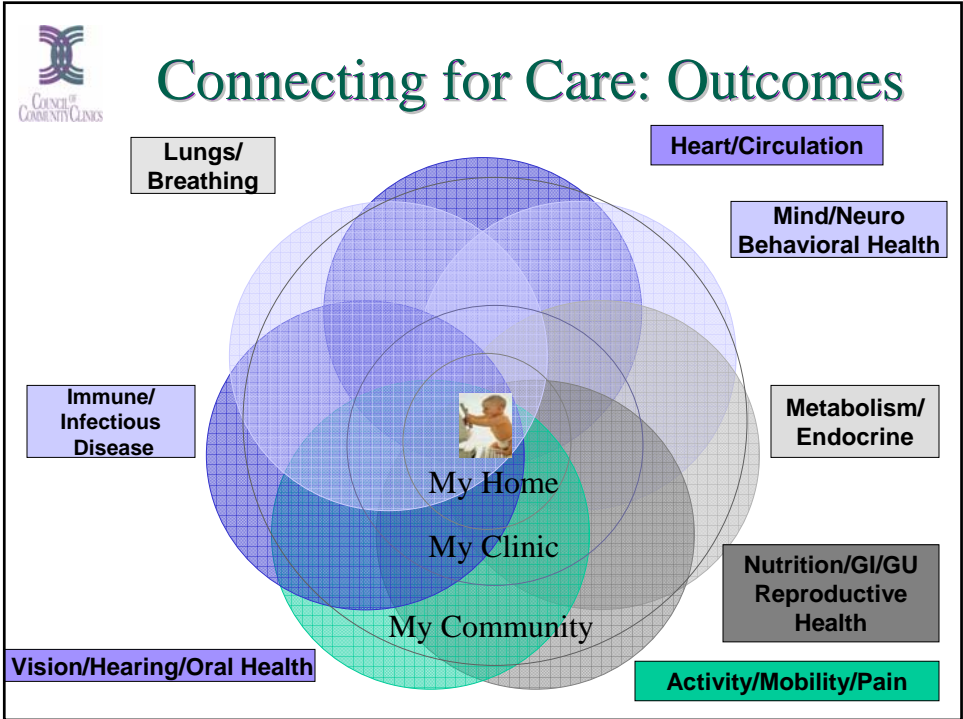
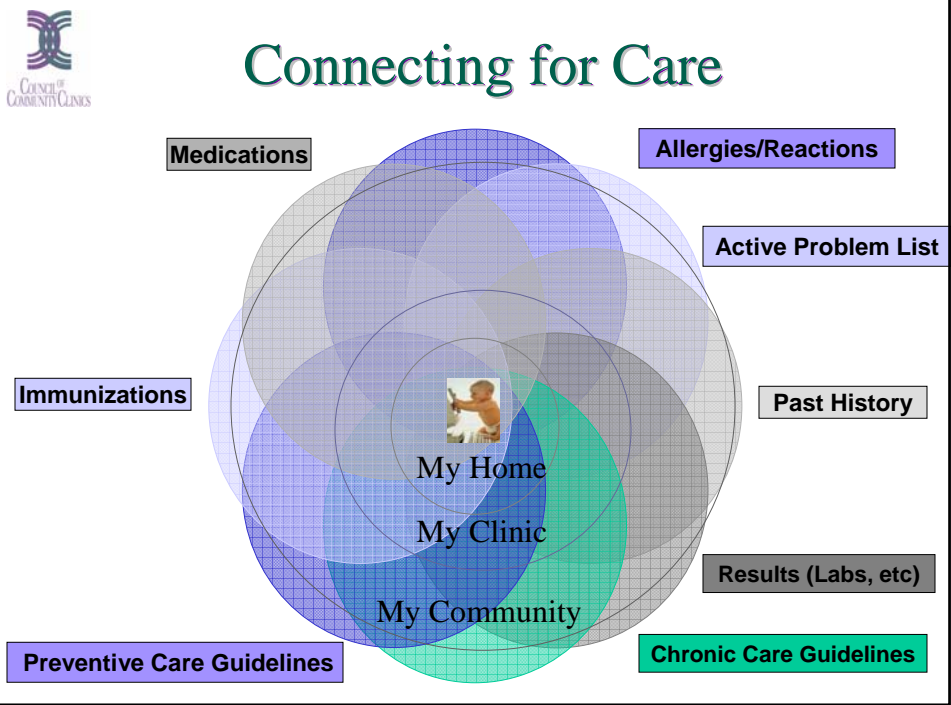
- Vision / Mission
- Guiding Principles
- Goals / Objectives
- Time Line / Milestones
- Governance Structure
- Roles / Responsibilities
- Communication Plan
- Issues / Ideas Matrix

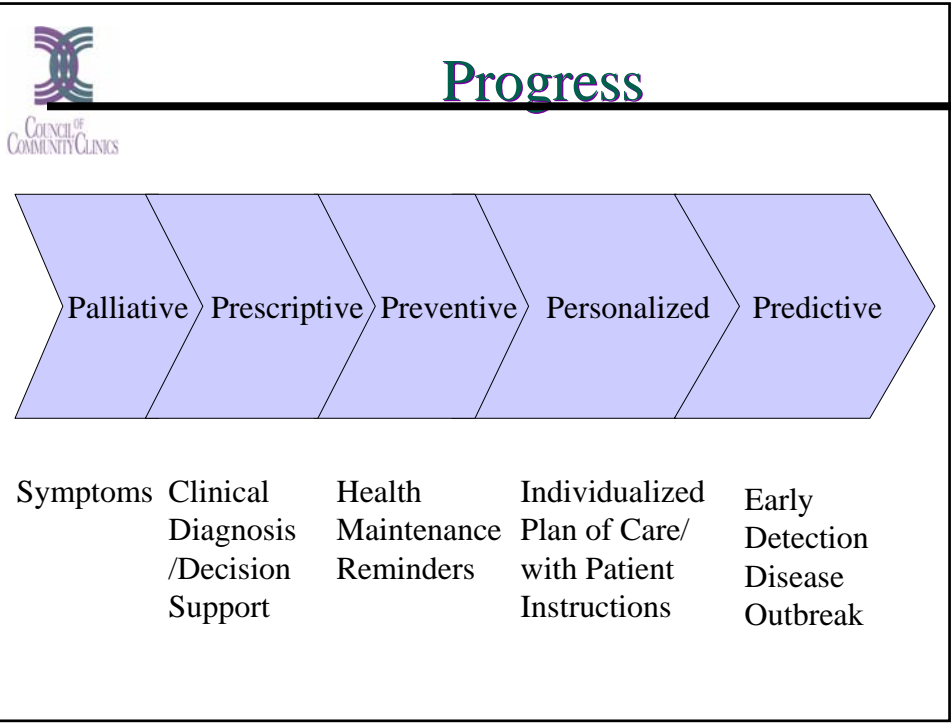

COUNCIL OF
COMMUNITY CLINICS

Connecting for Care



- PHR
- My Home
- My Clinic
- My Community
- EHR
- CCR





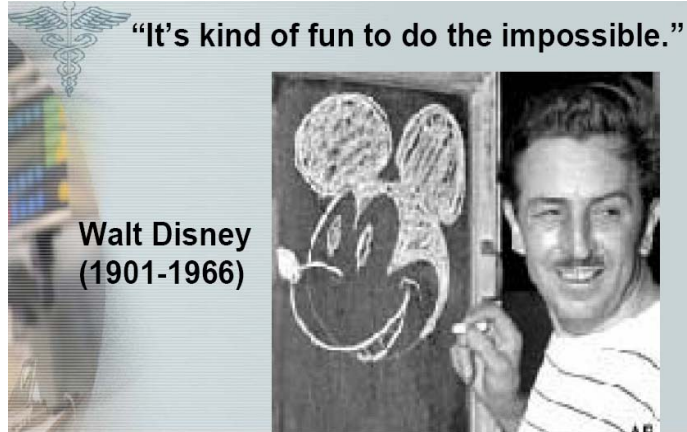

Innovation.. Collaboration

“The aspect of innovation most exciting to me... is the broad collaboration required to make an idea a reality.”

– Rashid Skaf, President and CEO, AMX Corporation



Closing Thought



Linda Travis Macomber RN BSN MBA
EHR Project Manager
Council of Community Clinics
San Diego, Ca.

Lmacomber@ccc-sd.org

619 542-4348



References

- Council of Community Clinics www.ccc-sd.org
- Community Clinics Initiative (CNEA)
www.communityclinics.org/
- CEO Innovation study
www.ibm.com/ibm/ideasfromibm/us/enterprise/mar27/ceo_study.html
- www.calrhio.org (Disney photo)